

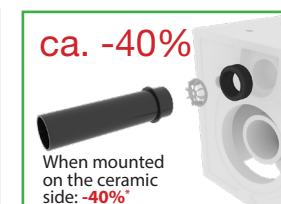
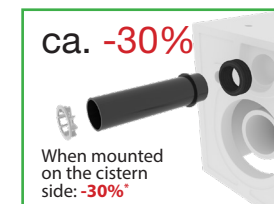
Installation Top-Fixation **without** sound insulation

Mounting Instruction 220345
for Item A10279

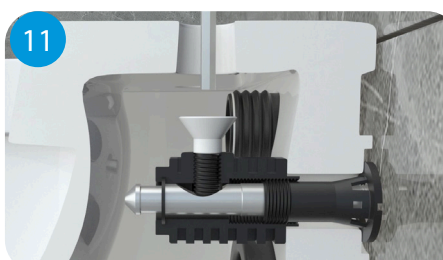
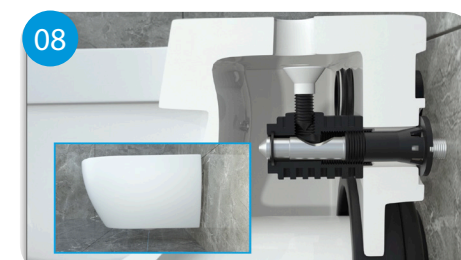
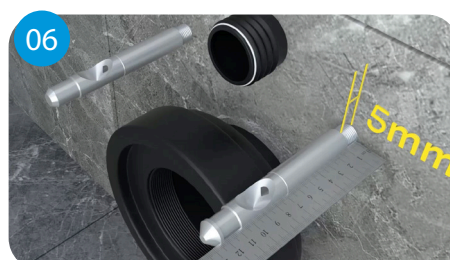


Assembly instructions for flow reducer

The flush flow reducer should only be used if the flush pressure is too high and over-splashing occurs during flushing. The throttle is simply inserted into the inlet pipe to the WC. Depending on the position, this results in a reduction of 30-40%.



* Figures are approx. values



Installation Top-Fixation **with** sound insulation

Mounting Instruction 220345
for Item A10279

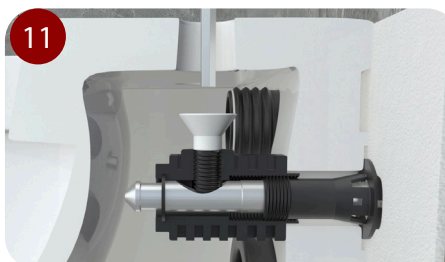
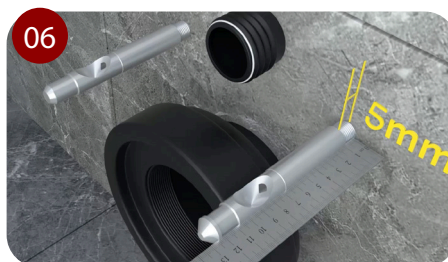
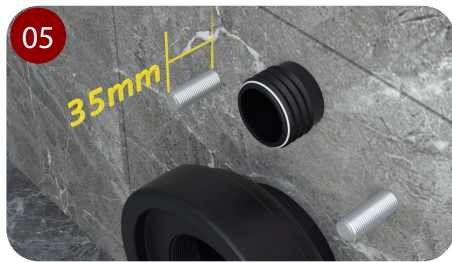


Assembly instructions for flow reducer

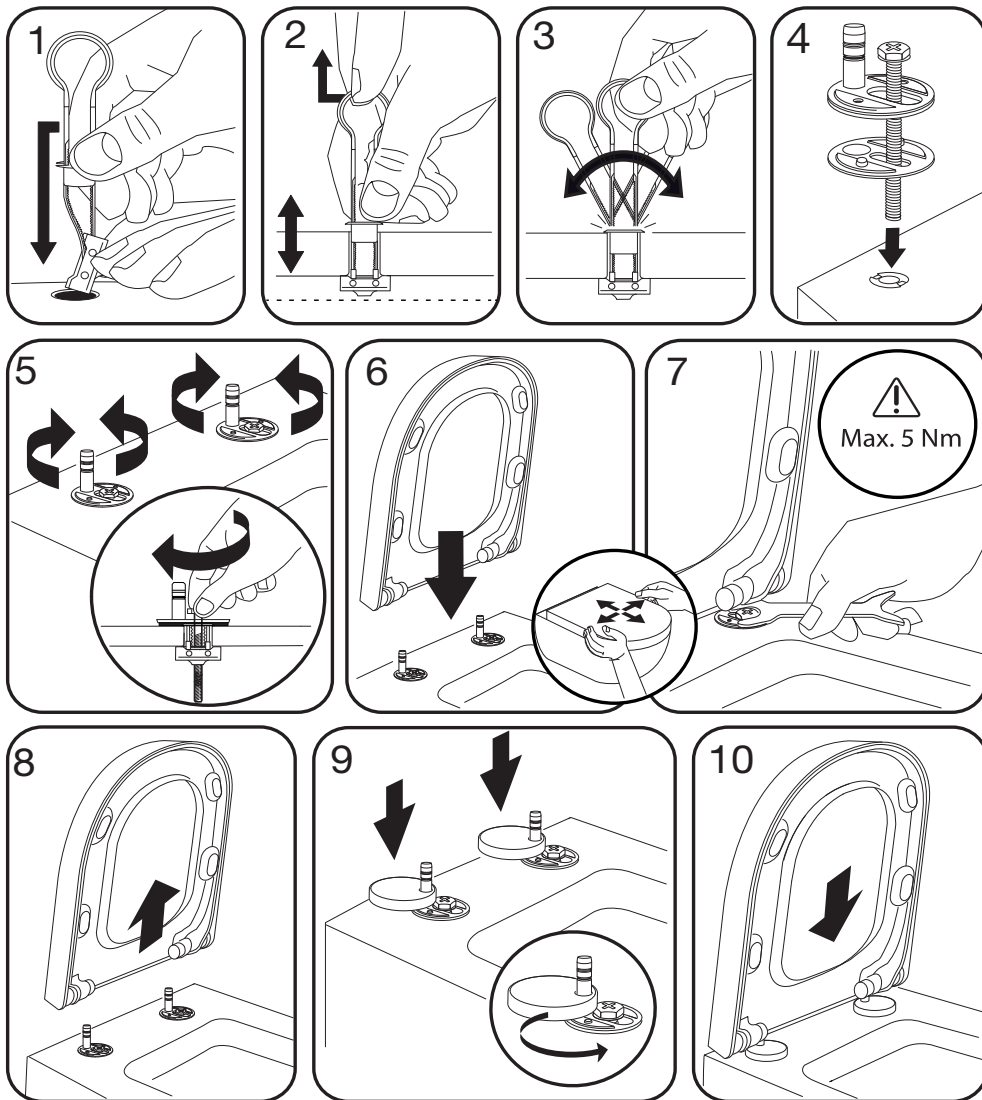
The flush flow reducer should only be used if the flush pressure is too high and over-splashing occurs during flushing. The throttle is simply inserted into the inlet pipe to the WC. Depending on the position, this results in a reduction of 30-40%.



* Figures are approx. values



DK3/DG5



31-05-2024

