



**Pressalit Sway D300 934**  
**Toilet seat with soft close and lift-off incl. hinge in stainless steel**

**Features**

Lift-off, Soft close

**Item number**

934230-BL6999  
 VVS:615055230  
 NRF:6190307  
 RSK:7821898  
 EAN:5708590365619



With its well-composed lines, SWAY D300 demonstrates how slimness and self-assurance can work together. Spoil yourself with a seat that is the perfect match for your stylish lifestyle.

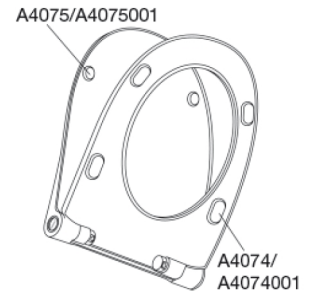
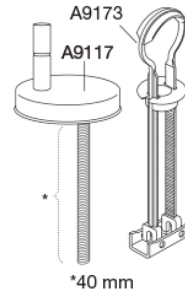
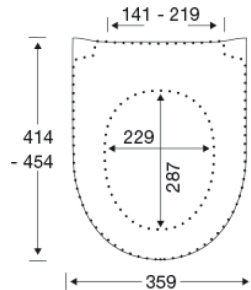
**Colour**

Matt white

**Description**

PRESSALIT toilet seat with cover, model "Pressalit Sway D300", art. no. 934 made of colour ingrained duroplast with BL6 universal toggle hinge with lift-off of stainless steel.

- centre distance: 141-219 mm
- load - ring seat 240 kg
- 10 year guarantee



**Design type**

Sandwich

**Designer**

Pressalit

**Design year**

2015



---

**Pressalit Sway D300 934**  
**Toilet seat with soft close and lift-off incl. hinge in stainless steel**

---

**Materials**

**TOILET SEAT:**

The material is colour ingrained duroplast (UF A 10 = urea formaldehyde) that contains no environmentally hazardous substances. UF plastic comprises approx. 70% urea formaldehyde resin, 30% cellulose, as well as 5% minerals, pigments, lubricants and moisture content. Free formaldehyde is released during the production process. Pressalit toilet seats have been measured after curing (< 0.01 mg/m<sup>3</sup>) to emit significantly below the permitted EU limit of 0.08 mg/m<sup>3</sup>.

**BUFFERS:**

EVA (copolymer made of ethylene and vinyl acetate).

**DAMPER KIT:**

Hydraulic damper with damper housing in stainless steel or thermoplastic, mounted with plastic parts in thermoplastic.

**MOUNT/HINGES:**

Stainless steel and thermoplastic.

**Product capacity**

Load - ring seat 240 kg

---

**Weight**

3,016 kg

**Carton size**

488x388x72 mm

**Gross weight**

3,625 kg

**Crate size**

500x400x368 mm

**Weight per crate**

18,125 kg

**Qty per crate**

5

**Crates per pallet**

18

**Qty per pallet**

90

**Cleaning**

Use a mild soap solution to clean the seat. Please take care that the seat and hinges are not left damp. Dry off any residual water or cleaning agent with a soft cloth. Avoid contact of the seat and hinges with abrasive, corrosive or chlorine-based cleaners, as these may cause damage or lead to flash rust. Therefore, when cleaning the bowl, make sure that the seat and cover are kept in an upright position until all cleaning agent has been flushed away.



PRESSALIT®

---

**Pressalit Sway D300 934**  
**Toilet seat with soft close and lift-off incl. hinge in stainless steel**

---

**Warranty**

Your Pressalit toilet seat is subject to a 10-year product warranty against presentation of receipt. You should contact the dealer or store where you purchased the seat in the event of a complaint. In the event of complaints about defective materials and/or manufacturing defects and/or functional limitations ascertained within a 10-year period, following proper use and cleaning of the toilet seat (we reserve the right to examine the toilet seat at our factory), Pressalit will deliver spare parts or replace the toilet seat by an identical or similar model. If the color is no longer available, Pressalit reserves its right to replace the toilet seat by a similar model in the color white. Upon replacement or delivery of a spare part, the warranty period will not be extended nor renewed. If replacement is not possible, Pressalit may instead refund the purchase price.

Subject to changes in the product range, technical changes and printing errors.

---

[pressalit.com](http://pressalit.com)

---