

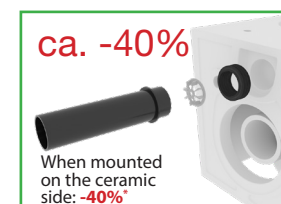
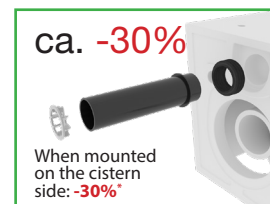
# Installation Top-Fixation **without** sound insulation

Mounting Instruction 220345  
for Item A10279

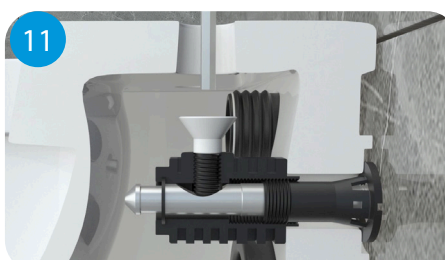
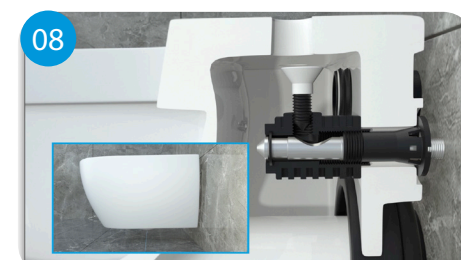
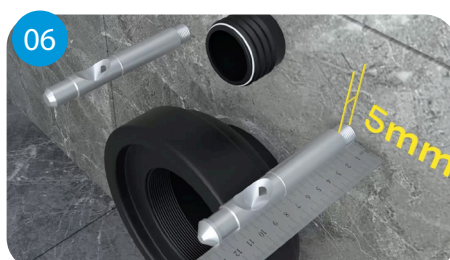


## Assembly instructions for flow reducer

The flush flow reducer should only be used if the flush pressure is too high and over-splashing occurs during flushing. The throttle is simply inserted into the inlet pipe to the WC. Depending on the position, this results in a reduction of 30-40%.



\* Figures are approx. values





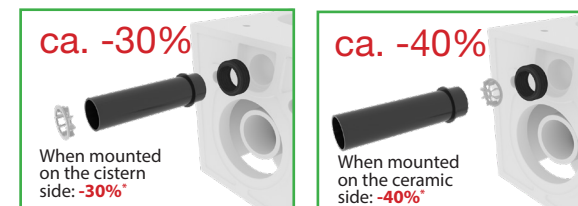
## Installation Top-Fixation **with** sound insulation

Mounting Instruction 220345  
for Item A10279

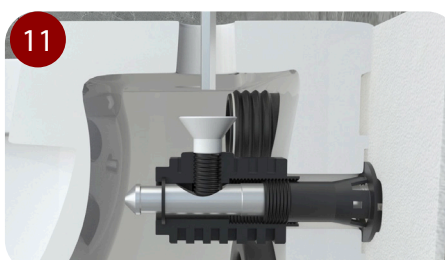
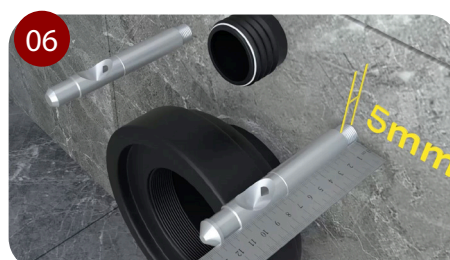


### Assembly instructions for flow reducer

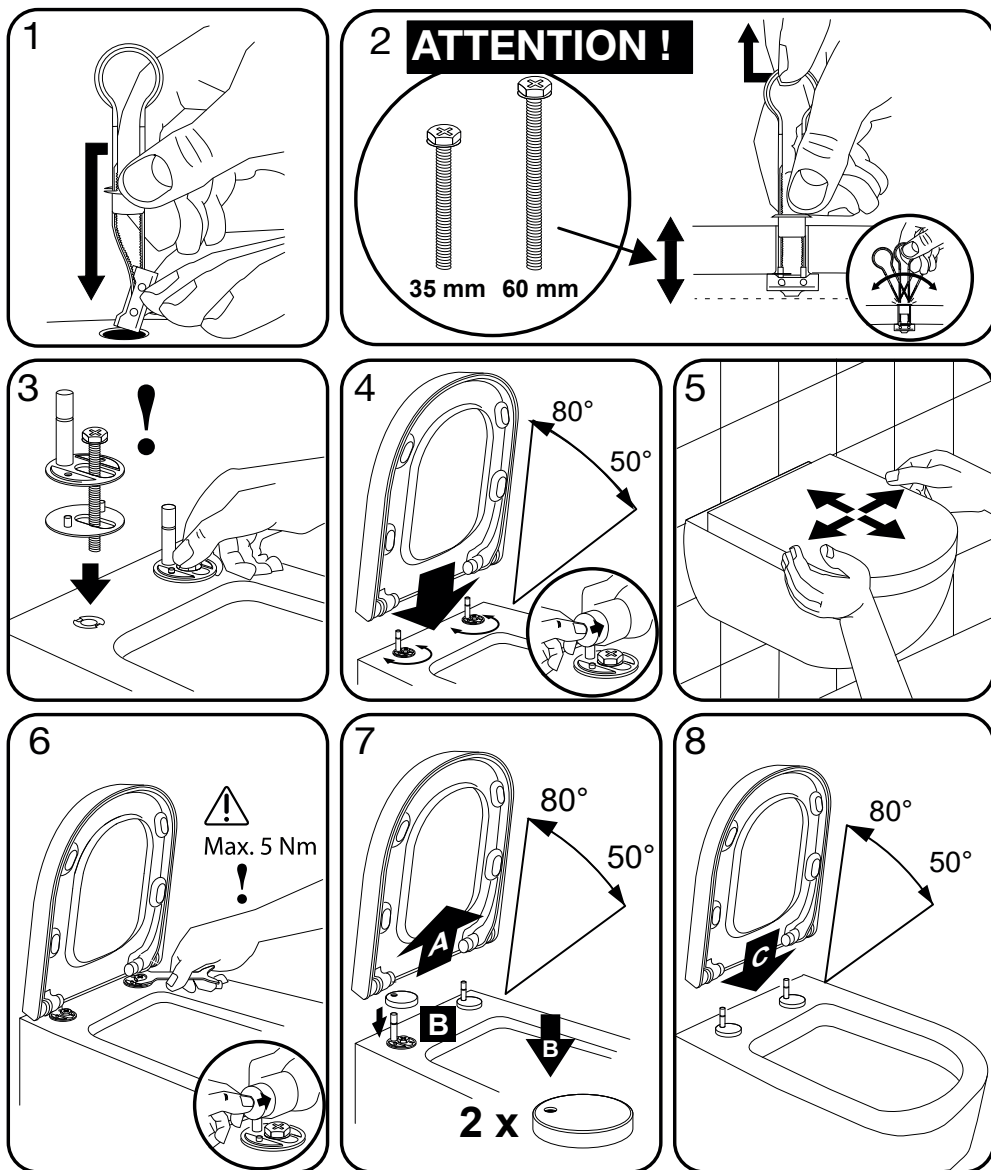
*The flush flow reducer should only be used if the flush pressure is too high and over-splashing occurs during flushing. The throttle is simply inserted into the inlet pipe to the WC. Depending on the position, this results in a reduction of 30-40%.*



\* Figures are approx. values



# DF4



12-01-2022

