

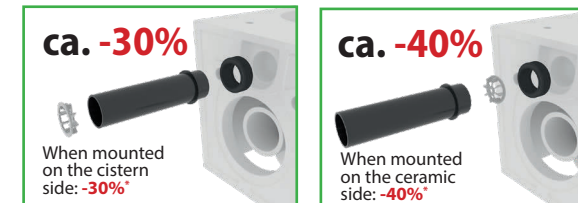
# Installation Top-Fixation **without** sound insulation

Item A10279

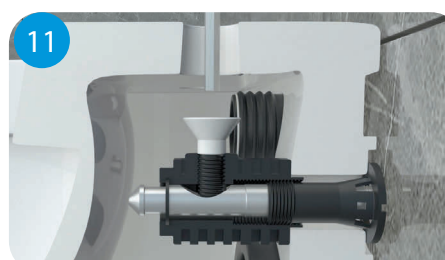
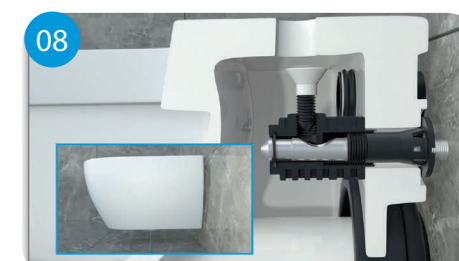
## PRESSALIT®

### Assembly instructions for flow reducer

The flush flow reducer should only be used if the flush pressure is too high and over-splashing occurs during flushing. The throttle is simply inserted into the inlet pipe to the WC. Depending on the position, this results in a reduction of 30-40%.



\* Figures are approx. values



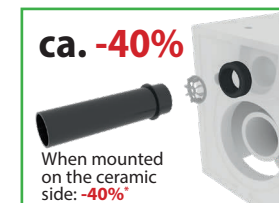
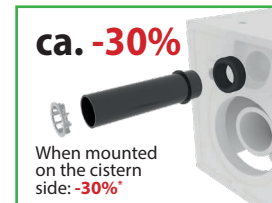
# Installation Top-Fixation **with** sound insulation\*

Item A10279

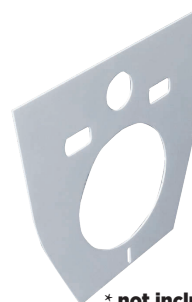
## PRESSALIT®

### Assembly instructions for flow reducer

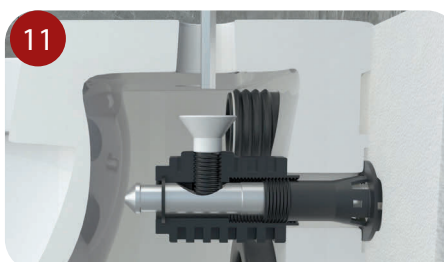
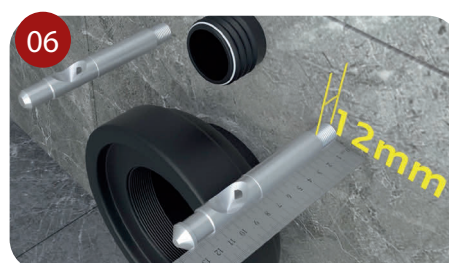
The flush flow reducer should only be used if the flush pressure is too high and over-splashing occurs during flushing. The throttle is simply inserted into the inlet pipe to the WC. Depending on the position, this results in a reduction of 30-40%.



\* Figures are approx. values



\* not included

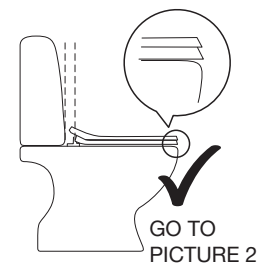
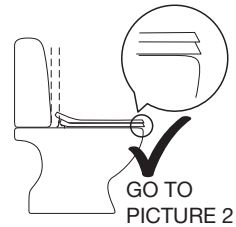
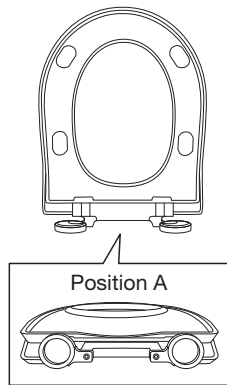




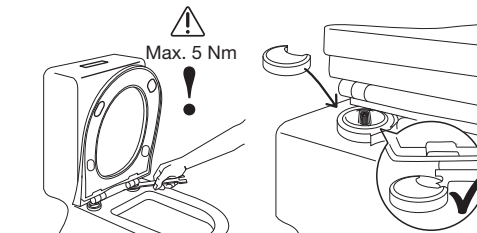
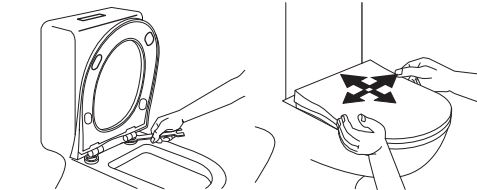
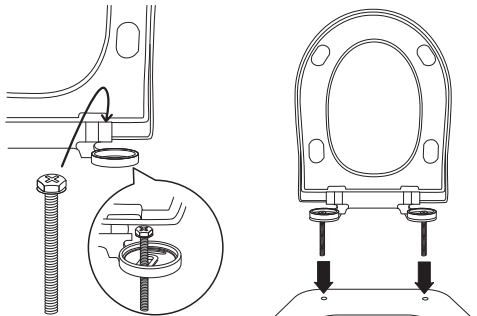
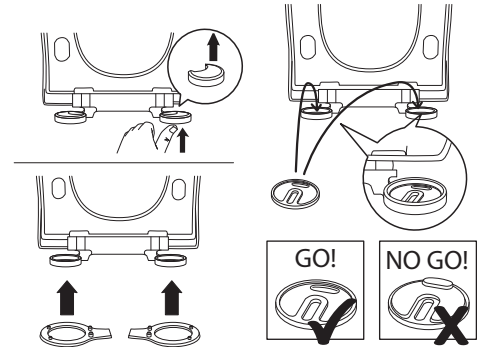
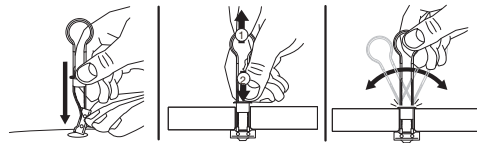
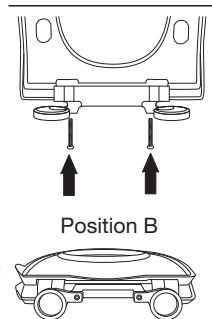
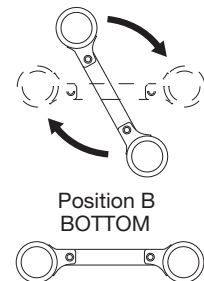
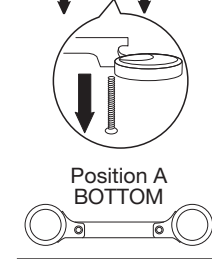
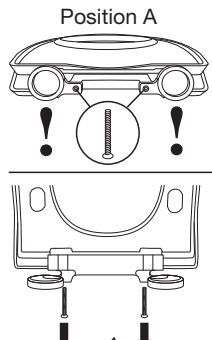
# A10119

## TOP Mounted Solid Pro

### 1 - POSITION A



### 1 - POSITION B



Rev C /14-03-2017